



Year 6 Curriculum Map Spring 2, 2023

This term's value is: Kindness

Key Information

PE:

Shonibare: Monday and Friday

Banksy: Thursday and Friday

Correct P.E. Kit must be worn to take part in the lesson. House top, Navy bottoms, trainers.

Maths:

Fractions:

- Comparing and ordering fractions
- Equivalent fractions
- Adding and subtracting fractions
- multiplication and division of fractions by fractions, mixed numbers and whole numbers
- Finding fractions of shapes, amounts and of units, (ml, km)

Decimal, percent and fractions:

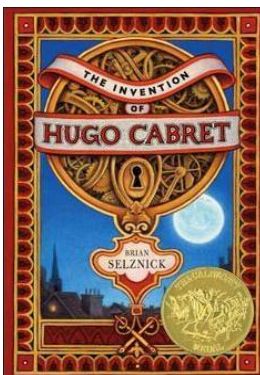
- Converting decimals to percentages
- Converting fractions to percentages
- Equivalent fractions decimals and percentages
- Finding percentages of shapes and amounts

We will continue to work on:

- all 4 operations and efficient mental strategies
- times tables by heart, up to 12 x 12
- Confidence with test skills

Help at home- these are ideas you can do with your child at home. It would be fantastic for children to bring any home learning into school to share with the class. These are optional. Homework will be sent separately.

English – 'Hugo Cabret'



Children will be developing their skills as authors, writing captions, settings, character descriptions, diary entries, and newspaper reports as well as creating and publishing our very own notebooks. We will also be brushing up on our grammar and spelling skills in both our own writing and in editing and improving writing.

Help at home:

Watch Hugo Cabret film.

Invention and Enterprise

Does innovation come from necessity?

Using, 'The invention of Hugo Cabret' we will be debating whether innovation comes from necessity and why people continue to innovate.

We will be learning about evolution and how habitat influences adaptation and how the loss of habitat can lead to extinction, when learning about the work of Charles Darwin and the theory of Evolution.

RE: In RE we will be learning about Christian worship and will be discussing Easter.

Help at home: Discuss what the Easter period means to your family.

PSHE: This half term we will be looking at 'Healthy Me'. We will be looking at taking responsibility for our health and making choices that benefit health and well-being, including drugs, alcohol and mental health.

Help at home: Discuss how to keep healthy and self-care with family members.

Science: Evolution and Inheritance

We will be learning to:

- Recognise that living things have changed over time and that fossils provide information about living things that inhabited the Earth millions of years ago.
- Recognise that living things produce offspring of the same kind, but normally offspring vary and are not identical to their parents.
- Identify how animals and plants are adapted to suit their environment in different ways and that adaptation may lead to evolution.
- Describe how living things are classified into broad groups according to common observable characteristics and based on similarities and differences, including micro-organisms, plants and animals
- Give reasons for classifying plants and animals based on specific characteristics and decide where they belong

Help at home:

research theory of evolution and the life of Charles Darwin.